



DATOS TÉCNICOS



TIPO DE VÁLVULA:
MATERIALES:

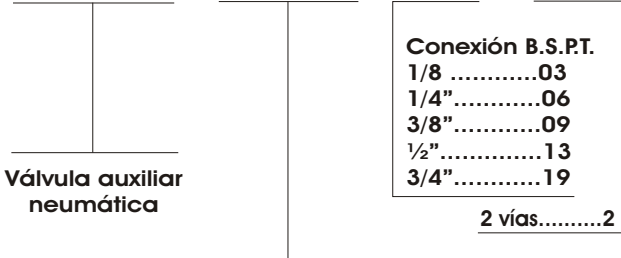
Válvulas auxiliares neumáticas
Cuerpo de aluminio, tornillo de registro de latón y
guarniciones de NBR.

TEMPERATURA DE
FUNCIONAMIENTO:
PRESIÓN DE TRABAJO:
FLUIDO:
POSICION DE TRABAJO:

DE -20 A 60 °C
DE 0.5 A 10 Bar
Aire Comprimido filtrado y lubricado
indiferente

REGULADOR DE CAUDAL UNIDIRECCIONAL

VAN - 351 - XX - 2



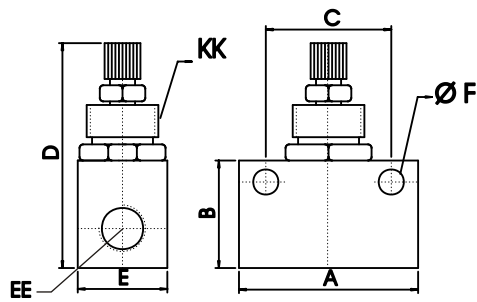
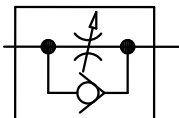
Válvula auxiliar
neumática

Conexión B.S.P.T.

- 1/8"03
- 1/4"06
- 3/8"09
- 1/2"13
- 3/4"19

2 vías.....2

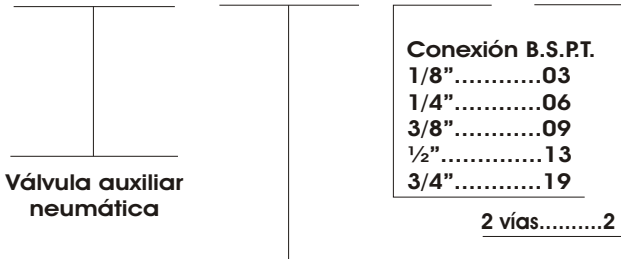
Regulador de caudal unidireccional:



EE	A	B	C	D	E	F	KK
1/8"	32	22	23	47	16	4,5	M12x1
1/4"	50	20	35	63	25	7	M20x1,5
3/8"	50	30	35	63	25	7	M20x1,5
1/2"	65	46	45	85,5	32	7	M20x1
3/4"	78,5	50	58,5	89,5	38	7	M20X1

REGULADOR DE CAUDAL BIDIRECCIONAL

VAN - 352 - XX - 2



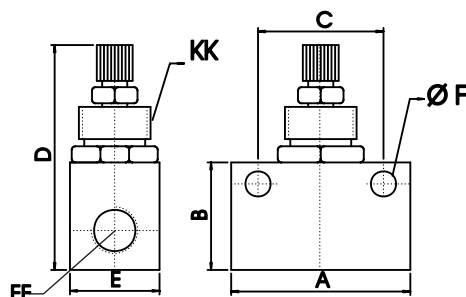
Válvula auxiliar
neumática

Conexión B.S.P.T.

- 1/8"03
- 1/4"06
- 3/8"09
- 1/2"13
- 3/4"19

2 vías.....2

Regulador de caudal bidireccional:
Caudal controlado en ambos sentidos

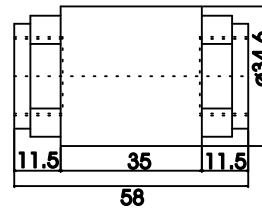
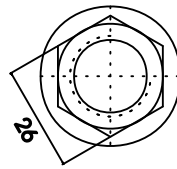
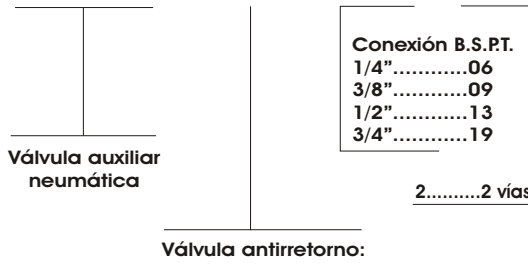


EE	A	B	C	D	E	F	KK
1/8"	32	22	23	47	16	4,5	M12x1
1/4"	50	20	35	63	25	7	M20x1,5
3/8"	50	30	35	63	25	7	M20x1,5
1/2"	65	46	45	85,5	32	7	M20x1
3/4"	78,5	50	58,5	89,5	38	7	M20X1



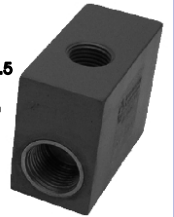
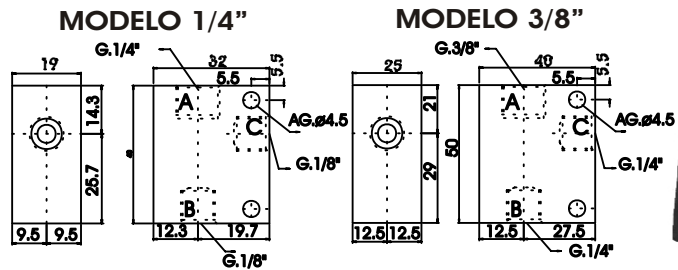
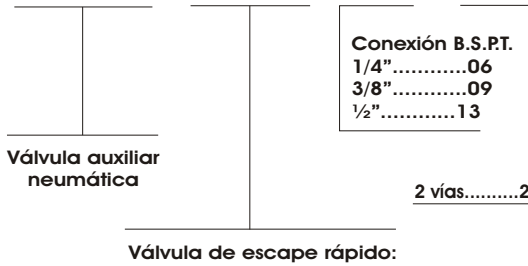
VÁLVULAS ANTIRRETORNO

VAN - 353 - XX - 2

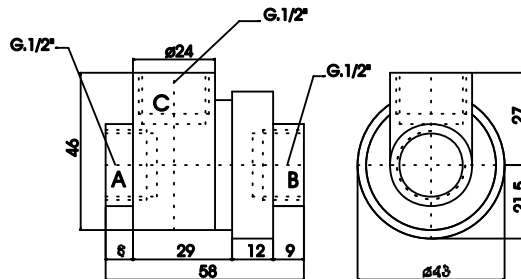


VÁLVULAS DE ESCAPE RÁPIDO

VAN - 354 - XX - 2

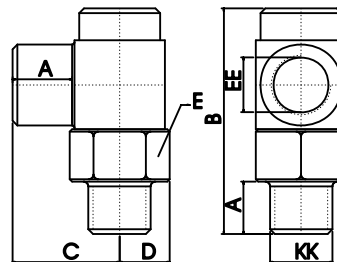
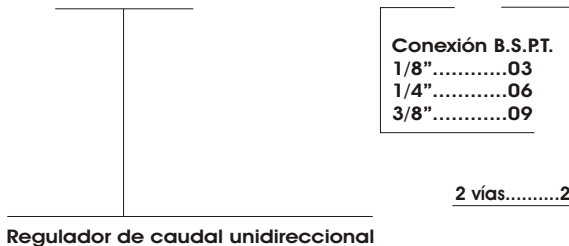


MODELO 1/2"

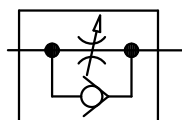


REGULADOR DE CAUDAL UNIDIRECCIONAL (acodado)

VCA - 100 - XX - 2



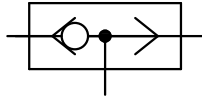
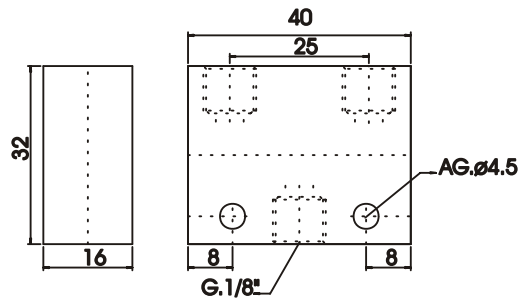
	EE	A	B	C	D	E	KK
1/8"	8	37,5	18	9	15,8	1/8"	
1/4"	11	47	22,5	11	19	1/4"	
3/8"	15	65	39	14,5	25,4	1/2"	





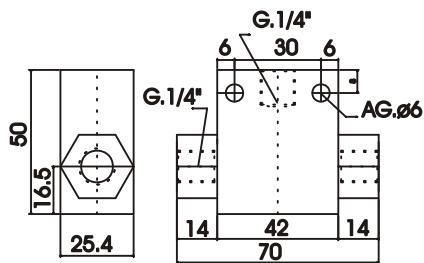
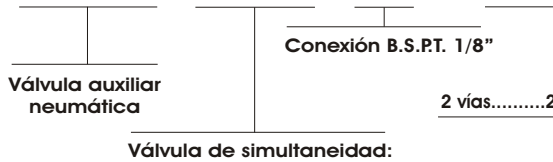
VÁLVULA SELECTORA DE CIRCUITO FUNCIÓN "O"

VAN - 356 - XX - 2



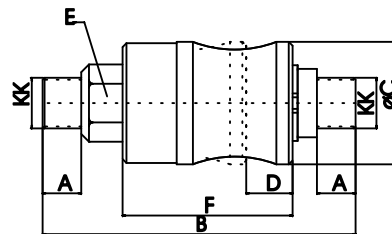
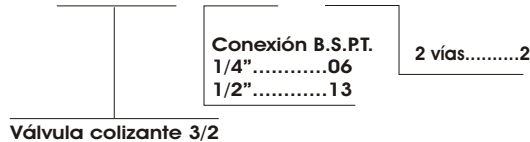
VÁLVULAS DE SIMULTANEIDAD FUNCIÓN "Y"

VAN - 357 - XX - 2



VÁLVULA COLIZANTE 3/2

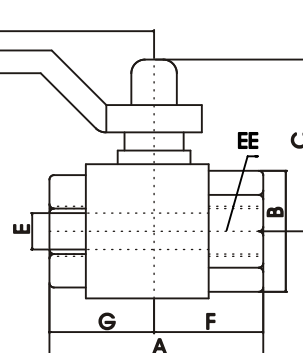
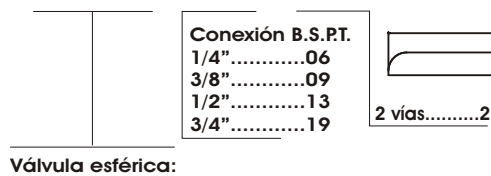
VC - XX - 2



KK	A	B	C	D	E	F
1/4"	10	81	31,7	12	19	44
1/2"	15	120	44	22,5	25,4	67

VÁLVULA ESFÉRICA PARA USO NEUMÁTICO E HIDRÁULICO

VE - XX - 2



EE	A	B	C	D	E	F	G
1/4"	44,4	23,5	37	80	10	22,2	22,2
3/8"	44,4	24	37	80	10	22,2	22,2
1/2"	50,5	30,5	41	80	15	25	25,5
3/4"	57,5	37	55	113	20	28	29,5