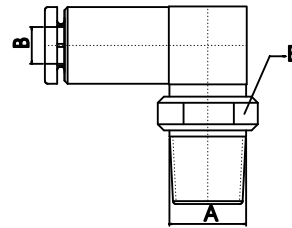




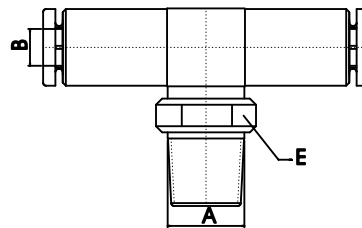
## CODO FIJO

CODIGO	ROSCA BSPT (A)	Ø TUBO (B)	HEXAGONO PARA LLAVE (E)
CF-01-04	M5	4/2.7	9.52
CF-01-06	M5	6/4	12.7
CF-03-04	1/8	4/2.7	9.52
CF-03-06	1/8	6/4	12.7
CF-06-06	1/4	6/4	12.7
CF-03-08	1/8	8/6	14.2
CF-06-08	1/4	8/6	14.2
CF-06-10	1/4	10/8	17.4
CF-09-10	3/8	10/8	17.4
CF-09-12	3/8	12/10	22.22
CF-13-12	1/2	12/10	22.22



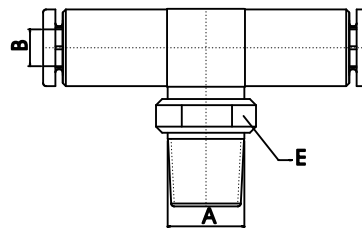
## "TE" FIJA

CODIGO	ROSCA BSPT (A)	Ø TUBO (B)	HEXAGONO PARA LLAVE (E)
TF-01-04	M5	4/2.7	9.52
TF-03-04	1/8	4/2.7	9.52
TF-03-06	1/8	6/4	12.7
TF-06-06	1/4	6/4	12.7
TF-03-08	1/8	8/6	14.2
TF-06-08	1/4	8/6	14.2
TF-06-10	1/4	10/8	17.4
TF-09-10	3/8	10/8	17.4
TF-09-12	3/8	12/10	22.22
TF-13-12	1/2	12/10	22.22



## "TE" GIRATORIA

CODIGO	ROSCA BSPT (A)	Ø TUBO (B)	HEXAGONO PARA LLAVE (E)
TG-01-04	M5	4/2.7	9.52
TG-03-04	1/8	4/2.7	9.52
TG-03-06	1/8	6/4	12.7
TG-06-06	1/4	6/4	12.7
TG-03-08	1/8	8/6	14.2
TG-06-08	1/4	8/6	14.2
TG-06-10	1/4	10/8	17.4
TG-09-10	3/8	10/8	17.4
TG-09-12	3/8	12/10	22.22
TG-13-12	1/2	12/10	22.22



## "TE" 3 LADOS TUBO

CODIGO	Ø TUBO (B)
T-00-04	4/2.7
T-00-06	6/4
T-00-08	8/6
T-00-10	10/8
T-00-12	12/10

